

The University of Kansas Medical Center JCERT University Report



THE UNIVERSITY OF KANSAS

CANCER CENTER



October 2017

KU Clinical Research Center Overview

Designed unlike any other clinical research facility in the country, the 82,400-square-foot **KU Clinical Research Center** (KU CRC) is equipped with state-of-the-art features and efficient use of space, resources and manpower to best accommodate patients and researchers. The building was donated by the Hall Family Foundation, totally renovated by the JCERT Authority, and features:

- Cutting-edge cancer trials, easily accessible outpatient rooms, office space and specimen collection labs
- Clinical research functions combined into one location
- Pharmacy to dispense and monitor medications along with pharmacy patient advocates to help with insurance billing questions and issues
- Clinical lab for performing complete blood counts, blood chemistry analysis, urinalysis and preparation of bone marrow biopsies
- A pavilion for gatherings and community events

At the KU CRC, clinical trials are designed to identify safer and more effective approaches to prevention, screening, diagnosis and treatment of cancer. Cancer clinical trials provide access to potential advancements in care and lead to medical innovations in cancer prevention and treatment. These trials may be a patient's best chance for increased survival.

Through the **Early-Phase I Oncology Unit**, the KU CRC strives to:

- Introduce new cancer drugs to the market that are more effective and less toxic
- Offer more treatment options to patients
- Develop strong partnerships with referring physicians
- Gain national program recognition

The **Clinical Trials Office (CTO)** provides comprehensive, centralized support services that span the life cycle of cancer clinical trials from concept through manuscript and assures that the patient population and resources needed to successfully conduct these trials is in compliance with all federal, state and local regulations. The CTO has facilitated significant growth of investigator-initiated clinical research at the KU Cancer Center while implementing and administering cost-effective processes to ensure the research activities have scientific merit, protect patient safety, maintain scientific integrity and are fiscally sound.

The **Midwest Cancer Alliance (MCA)** is the outreach arm of The University of Kansas Cancer Center. The MCA is a membership-based organization that brings together cancer research, care and support professionals to advance the quality and reach of cancer prevention, early detection, treatment and survivorship. It links member hospitals, medical professionals and their patients with KU Cancer Center research and clinical trials. The administrative offices for the MCA are housed in the KU CRC.

The KU CRC is an important component of KU Cancer Center's efforts to achieve Comprehensive Cancer Center designation from the National Cancer Center Institute, which would further position KU and its partners at the forefront of cancer research, treatment and possible cures.

What Our Clinical Trial Patients Have to Say



"If I could help someone else avoid some of what I went through during treatment, then a clinical trial is the right thing to do. I wanted to help make a difference for another person."

-Michael Farmer, KU CRC Clinical Trial Patient

Transforming Cancer Care in Our Region

In 2012, The University of Kansas Cancer Center achieved National Cancer Institute (NCI) Cancer Center designation, a significant accomplishment. Of more than 5,000 cancer centers in the U.S., just 69 are NCI-designated. KU Cancer Center's NCI designation was recently renewed, and Children's Mercy joined Stowers Institute as a consortium partner. We are already working towards the next goal: achieving NCI Comprehensive designation.

Achieving Comprehensive Cancer Center designation will enable us to offer the highest level of research, prevention, treatment and survivorship available. Comprehensive designation is awarded after a rigorous evaluation process that shows the center pursues scientific excellence and has the capability to integrate diverse research approaches to cancer. Comprehensive Cancer Centers are expected to initiate and conduct early phase, innovative clinical trials and to participate in the NCI's cooperative groups by providing leadership and recruiting patients for trials. Comprehensive Cancer Centers must also conduct activities in outreach and education, and provide information on advances in healthcare for both healthcare professionals and the public.

NCI designation is transforming our region

- Patients treated at NCI centers have a 25 percent greater chance of survival
- 90 percent of Kansas City patients now receive life-saving cancer treatments in their own backyard
- Economic driver-- 3,600 jobs created and \$2.5 billion in economic development by 2018

Our journey needs to continue

- Exponential growth in cancer cases-- 45 percent increase projected by 2030
- Cancer is the #1 cause of death in Kansas and second cause in Missouri
- 1 in 2 men and 1 in 3 women will be diagnosed with cancer in their lifetime

NCI Designation brings a tailored approach to fighting cancer

- Cancer is becoming a disease of disparity
- Focus on cancer prevention, early detection and improved health outcomes
- Advance translational research

Benefiting our community through focused treatment and prevention efforts

- Improve access to prevention services and cancer treatment for underserved and minority communities
- Decrease smoking rates, increase HPV vaccinations and reduce obesity rates
- Extend the highest level of research, prevention, treatment and survivorship available

Accelerating progress: Because cancer does not wait

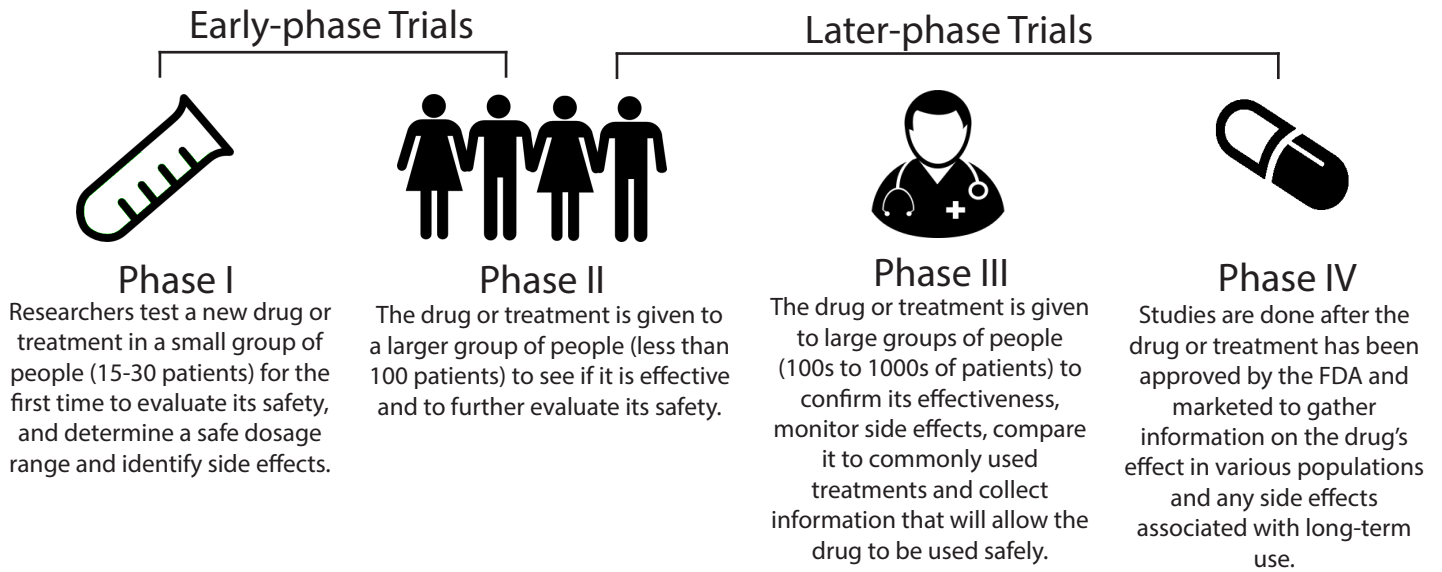
- Develop highly personalized cancer treatments for each unique patient
- Offer state-of-the-art cancer treatments here at home
- Recruit the best physician scientists
- Leverage partnerships for further innovation in drug discovery and development



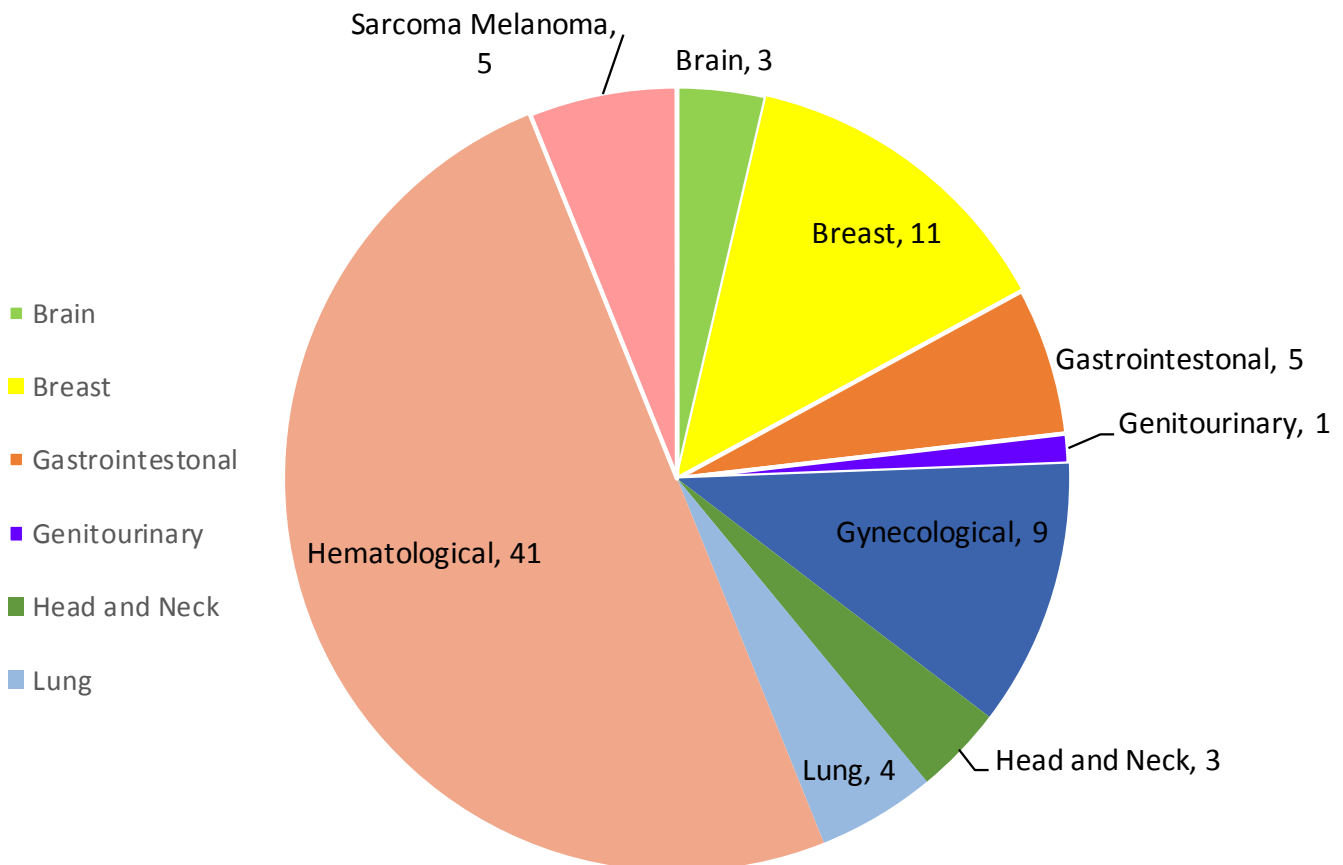
A Cancer Center Designated by the
National Cancer Institute

Types of Clinical Trials

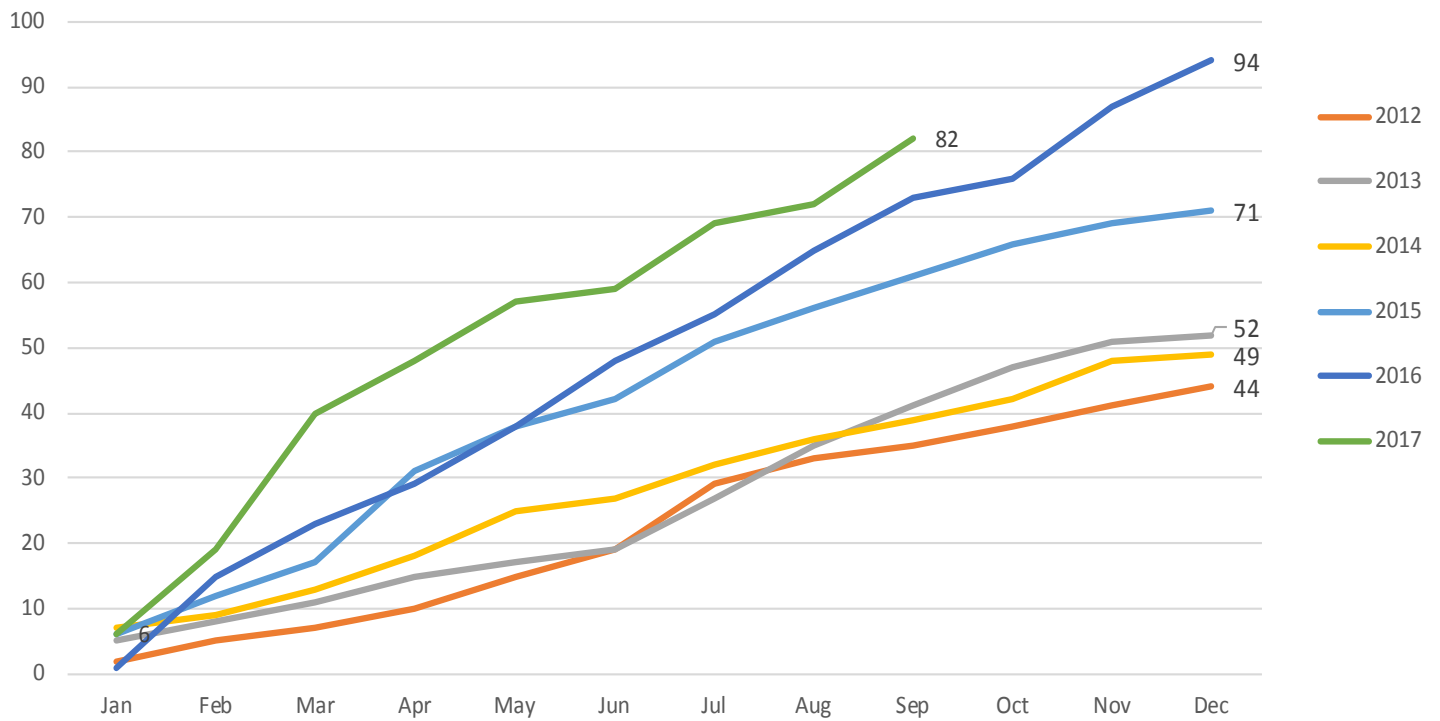
Cancer clinical trials provide access to potential advancement in care and lead to innovations in cancer prevention. Clinical trials are conducted in four phases:



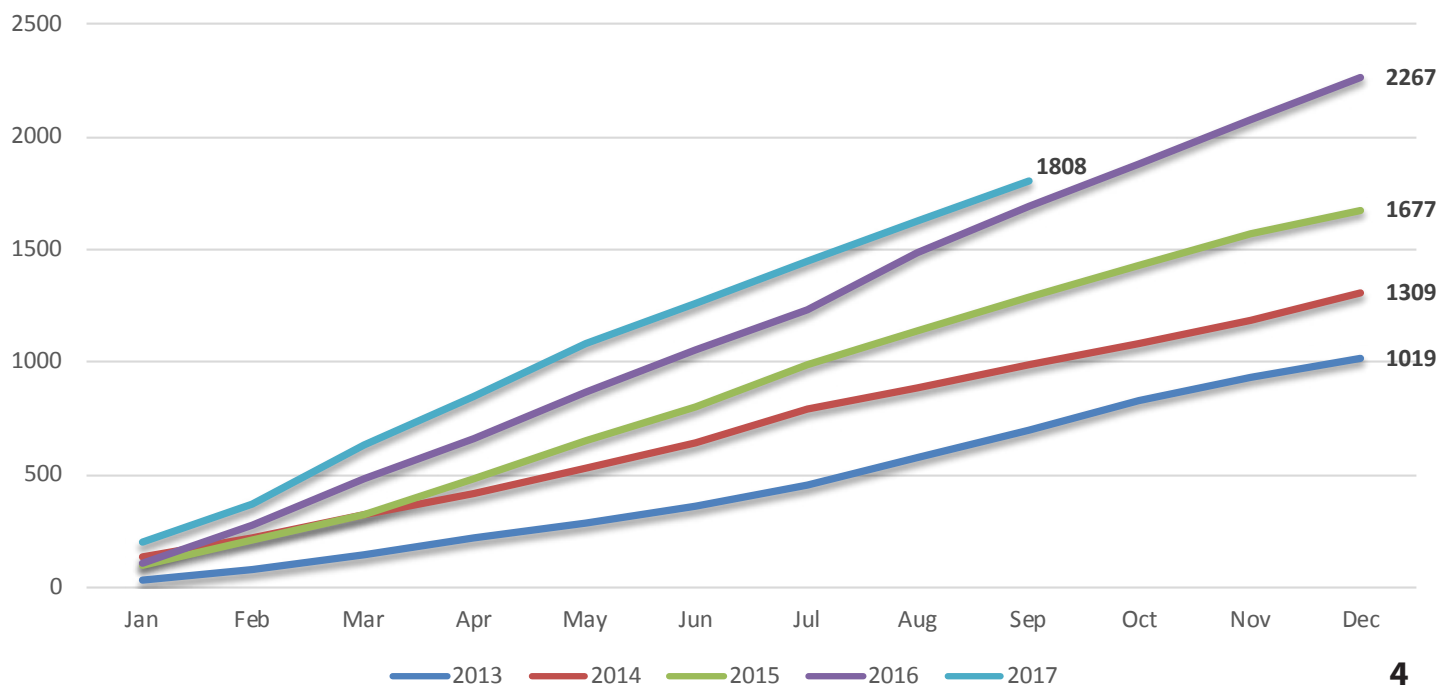
Early-phase Clinical Trials



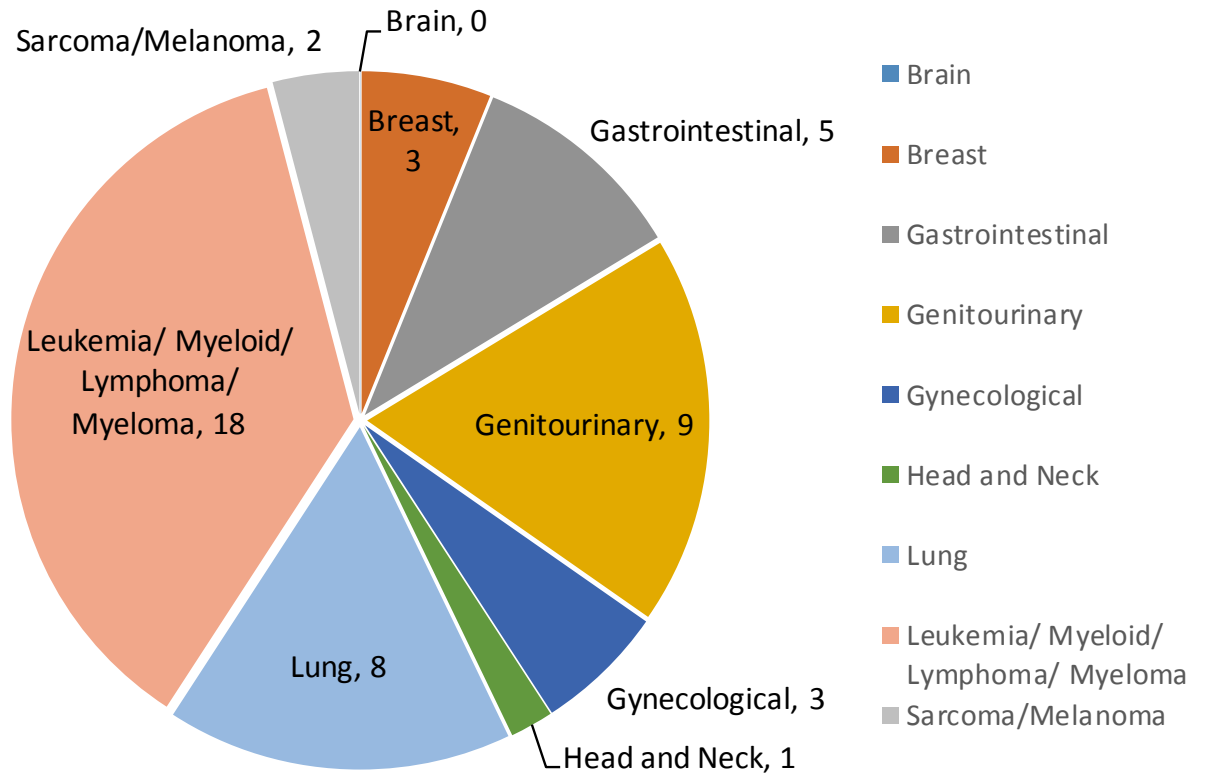
Early-phase Clinical Trial Accrual



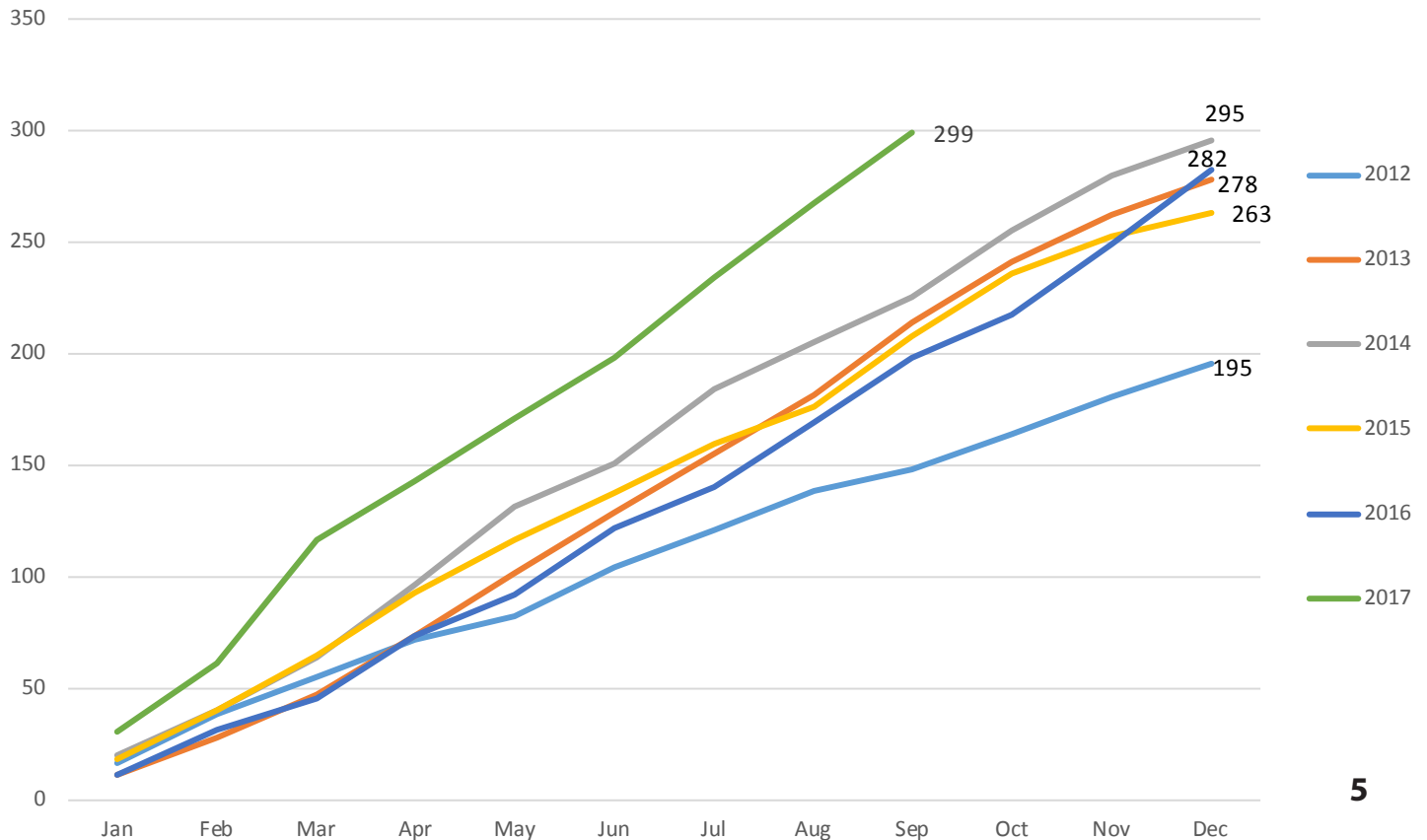
Early-phase KU CRC Patient Visits



Later-phase Clinical Trials



Later-phase Clinical Trial Accrual



Clinical Trials Patient Total By Location

Site Location	Patient Total
KU Clinical Research Center (early phase)	82
KU Cancer Center Main Outpatient site	291
KU Cancer Center Community sites	74
Midwest Cancer Alliance sites	24
Other sites	22

Top Five Counties for KU CRC Patient Visits

	County	Unique Patients
1	Johnson County (KS)	484
2	Jackson County (KS)	308
3	Clay County (MO)	146
4	Leawenworth County (KS)	101
5	Platte County (MO)	88

Services to Support Clinical Trials

Correlative Laboratories

The correlative laboratory is staffed and operated by the Clinical Pharmacology division of KU Cancer Center. This lab provides trained staff and equipment for the acquisition, processing, storage, and shipment of biological samples generated from clinical studies including blood, urine, ascites fluid and tissue samples. The Correlative Laboratories provide critical support for more than 130 cancer clinical trials and approximately 10 non-cancer trials.

Bioanalytical Laboratory

The Bioanalytical Laboratory at KU CRC is a state-of-the-art facility for the support of clinical and translational studies. The Bioanalytical Lab develops, optimizes, validates and applies various methods to the identification and quantitation of drugs, drug metabolites, and other small molecules from clinical samples to generate data for assessment of either pharmacokinetics or for examination of biomarkers of effect.

Pharmacokinetic/Pharmacodynamic Services (PK/PD)

The mission of the PK/PD unit is to advise investigators on the incorporation of PK/PD to add value to clinical studies and to guide the experimental design to maximize this value. This includes the optimization of dosing and sampling protocols. Data generated by the Bioanalytical Laboratory or by third parties are used for pharmacokinetic calculations.



Summary of Economic Impact of NCI Designation Pursuit

REGIONAL ECONOMIC IMPACT by CLINICAL TRIAL RESEARCH	Actuals 2007-2016	Projected 2017-2021	Total
<u>Economic Impact</u> ⁽²⁾			
Clinical Trial Operations & Research Investments	28,355,592	39,683,920	68,039,511
Clinical Trial Revenues from federal grants & private sectors	14,745,069	19,709,124	34,454,194
Additional Regional Economic Impact	30,056,927	42,064,955	72,121,882
	73,157,588	101,457,999	174,615,587
Clinical Research Center building renovation	19,352,640	-	19,352,640
Additional Regional Economic Impact	20,016,436	-	20,016,436
	39,369,076	-	39,369,076
Total Economic Impact	112,526,664	101,457,999	\$ 213,984,663
<u>Jobs Creation Impact</u> ⁽³⁾			
New Jobs Created by Clinical Trial Research Investment	103	28	131
New Regional Jobs Created	222	37	259
	325	65	391
New Jobs Created by Construction Investments ⁽⁴⁾	162	-	162
New Regional Jobs Created by Construction Investments	123	-	123
	285	-	285
Incremental Jobs Created	611	65	676

Assumptions

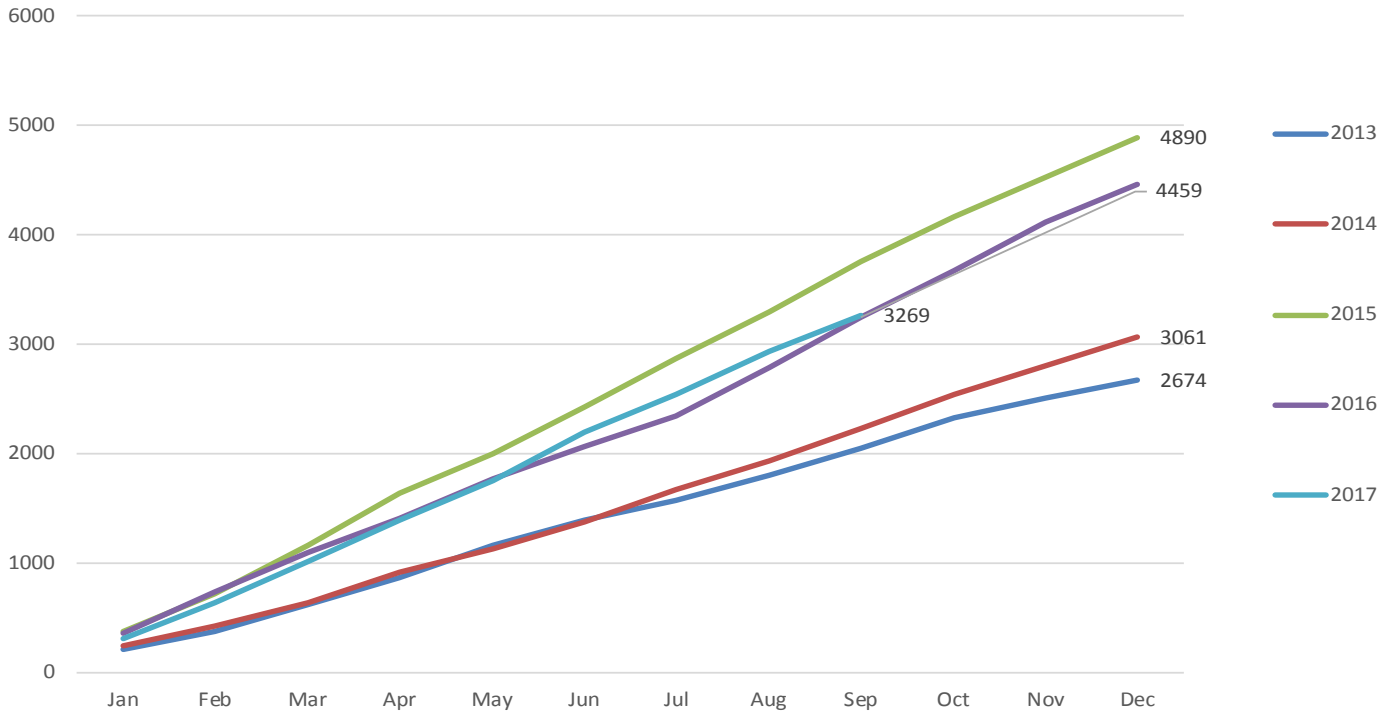
1. Financial Economic Impact: using business activity multiplier for state of Kansas of 2.06 per \$1 in NIH awards (per "How NIH Funding Helps Your State's Economy, Families USA" - June 2008)
3. Jobs Creation Impact: per "Battelle/BIO State Bioscience" reports circa 2010 and 2014, using employment multiplier for Kansas of 3.19 (2007-2012) and 2.30 (2013-2021) total jobs created for each new biotech job
4. For capital investment, using business activity multiplier for Kansas of 2.0343 per \$1 spend in construction; employment multiplier for state of Kansas of 1.76 total jobs created for each construction job (per 2010 annual Input-Output Table of Regional Input-Output Modeling System (RIM II), Bureau of Economic Analysis). The impacts last only for the duration of the construction.
5. Excludes clinical revenue and job growth

Other Organizations Conducting Research at the KU Clinical Research Center

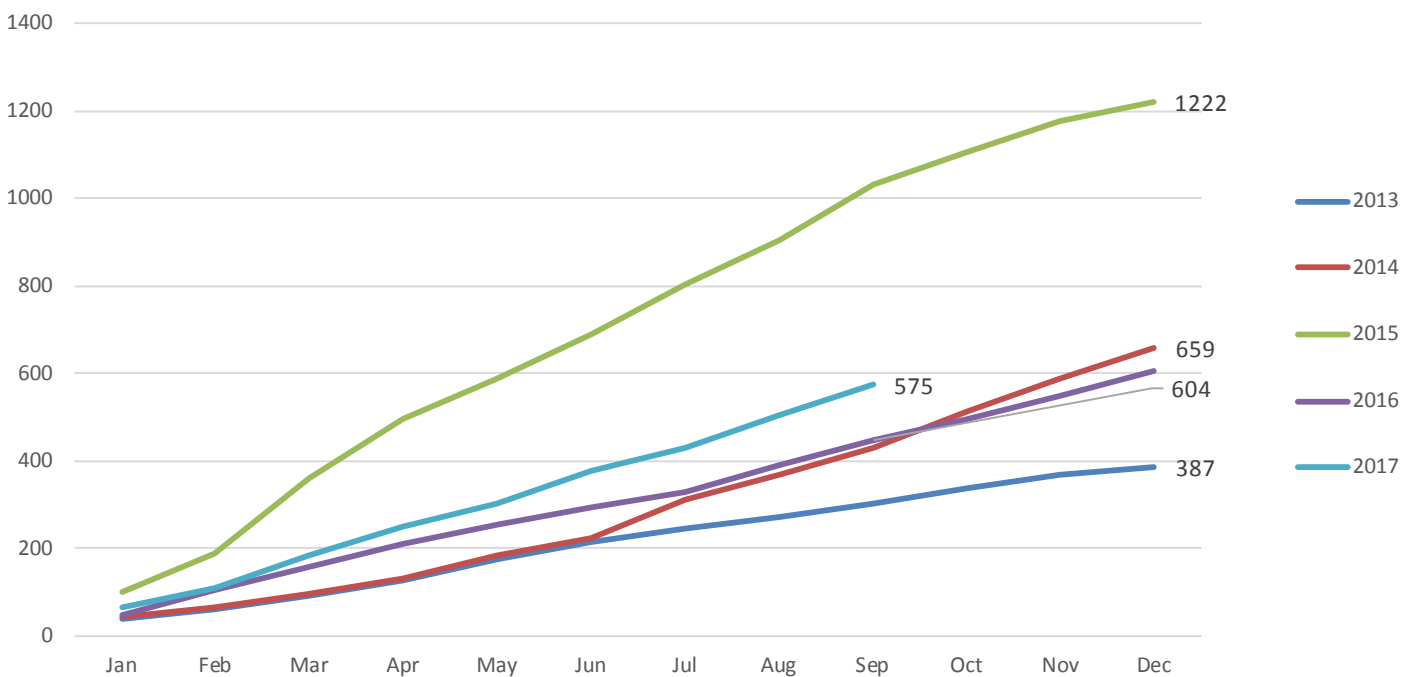
Clinical and Translational Science Unit (CTSU)

The CTSU provides the Kansas City region with a centralized resource for supporting clinical and translational research. The clinic and staff support both pharmaceutical trials and investigator-initiated trials for researchers mostly outside the oncology area, but some trials do support cancer and cancer survival.

Total CTSU Patient Visits



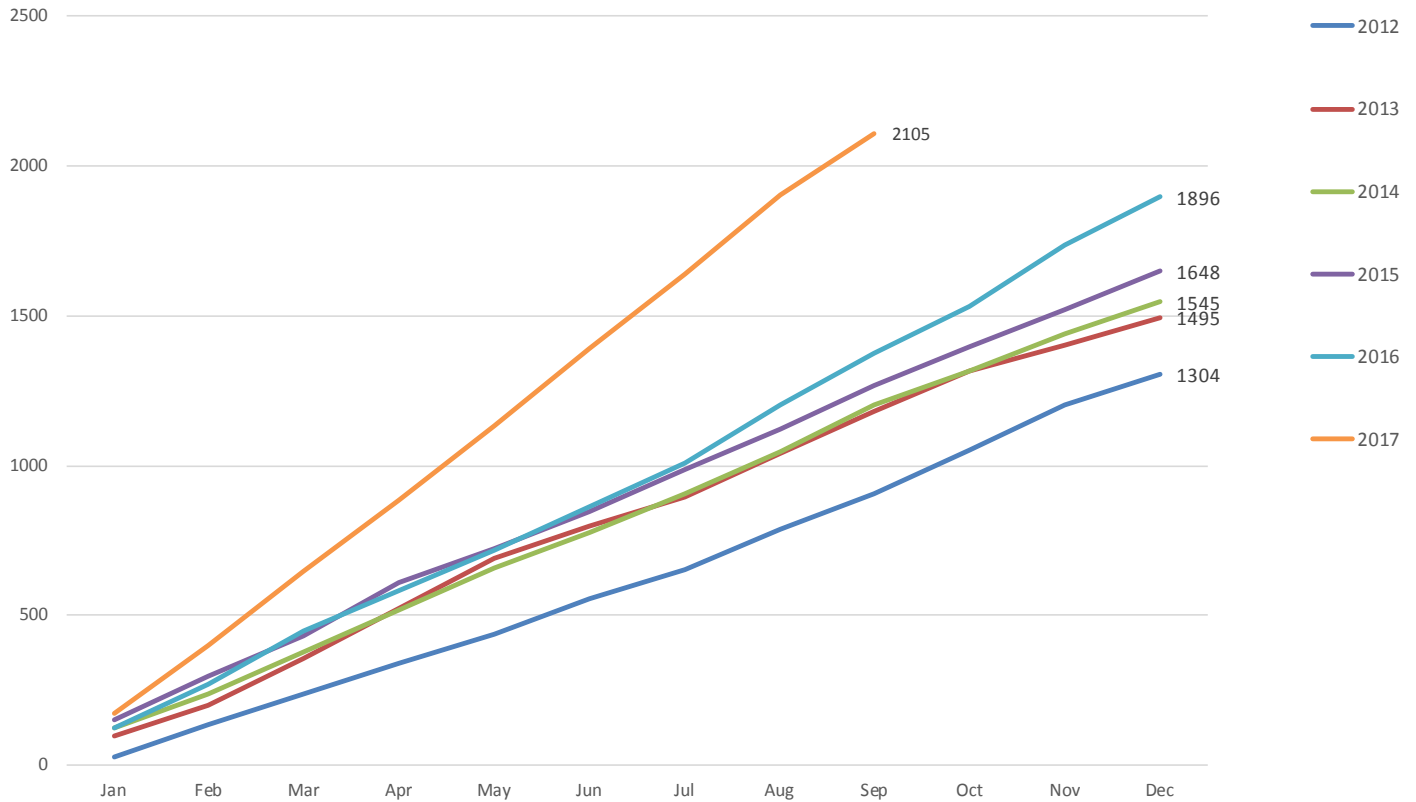
Total CTSU Patient Accrual



Alzheimer's Disease Center

The KU Alzheimer's Disease Center's (KU ADC) mission is to improve the lives of patients and families with Alzheimer's disease by eliminating the disease through research into its treatment and prevention. It is one of only 31 NIH-funded Alzheimer Disease Centers. The clinical operations of the KU ADC include both research and outpatient clinics which take place at the Clinical Research Center (CRC).

Alzheimer's Disease Center Patient Visits



Alzheimer's Disease Center

Since NIA funding began in 2011, the KU ADC has supported 21 national and international pharmaceutical Trials. The Center just started enrollment for the AbbVie and ADNI3 trials.

International/Pharmaceutical Trials

Study	Sponsor	Enrollment to Date
A4*	National Institutes of Health (NIH) /Eli Lilly	20
AbbVie*	AbbVie	1
ADNI3*	NIH/ATRI	0
ASPREE*	NIH/Berman Center	41
ENGAGE*	Biogen	7
LEARN*	NIH/Eli Lilly	14
LZAX*	Eli Lilly	8
NEUROTROPE*	Neurotrope	4
TCAD*	NIH/Toyama	13
TTP*	vTv Therapeutics	14
Elan 201	Janssen	3
IGIV	NIH/Baxter	11
Janssen 301	Janssen	2
Janssen 302	Janssen	5
Janssen 351	Janssen	6
Resveratrol	NIH	1
SNIFF	NIH/National Institute of Aging	2
SUMMIT AD	Janssen	11
Wyeth-3001	Wyeth	2
Exelon Patch	Novartis	8
Exelon Patch-open label	Novartis	6
	TOTALS	179

*Currently enrolling studies
NIH=National Institutes of Health

Alzheimer's Disease Center

The KU ADC has supported 30 investigator-initiated studies resulting in 1,567 enrollments to date.

Study	Sponsor	Enrollment to Date
ADC Clinical Cohort*	NIH	395
APEX*	NIH	89
APP PET-Disclosure*	NIH	267
EXERT	NIH	0
FamTechCare*	NIH	26
FRITO*	KU Endowment	55
Mediterranean Diet*	Frontiers/KU ADC Pilot	15
rrAD*	NIH	13
REACT*	NIH	32
REST*	KU ADC Pilot	3
SEAD2*	KUMC/Ausio	8
TOAD*	Alzheimer's Association	20
TrACR*	KU ADC Pilot/AHA	125
ACCEL	KU ADC Pilot	87
ADEPT	NIH	77
Diabetes and EF	Kansas Partners in Progress	8
EECP	Internal Medicine	7
INFORM	NIH	52
KDRAFT	CTSA	15
MPA/ACCEL	KU ADC Pilot	14
PACER	Ziegler Award	3
PACER 2	Foundation for Physical Therapy	24
POX	CTSA	6
Remote Monitoring	CTSA	6
RetinaAD	St. Luke's Hospital Foundation	35
SBIR	NICHD	33
SEAD	KUMC/Ausio	16
SPA	ADDF	20
TEAM	NIH	102
TORTIAS	NIH	14
	TOTAL	1567

Investigator-initiated Trials

*Currently enrolling studies
 ADDF=Alzheimer's Drug Discovery Foundation
 AHA=American Heart Association
 CTSA=Clinical Translational Science Award
 NIH=National Institutes of Health
 NICHD=National Institute of Child and Health Development
 KPP=Kansas Partners in Progress

**Johnson County Education Research Triangle
KUMC Clinicial Research Center
Statement of Net Assets**

	September 30, 2017	June 30, 2017	Revised June 30, 2016
ASSETS			
Cash and Cash Equivalents (Unencumbered)			
UMB Trustee Accounts (Bond Reserve /P&I)	\$ 1,094,596.20	\$ 1,763,142.56	\$ 1,756,900.60
KUMC JCERT Operations	3,703,734.00	4,014,896.00	4,283,862.00
KUMC JCERT Capital Reserve	1,176,164.00	809,755.00	550,000.00
KUMC JCERT Operating Reserve	1,200,000.00	1,100,000.00	1,000,000.00
Total Cash and Cash Equivalents (Unencumbered)	<u>7,174,494.20</u>	<u>7,687,793.56</u>	<u>7,590,762.60</u>
UMB Trustee Accounts Market Value Change	-	-	-
Capital Assets			
Land 4350 Shawnee Mission Parkway	1,421,810.00	1,421,810.00	1,421,810.00
Clinical Research Center Building & Improvements	20,247,771.54	20,247,771.54	20,218,071.16
Accumulated Depreciation Building & Improvements	(4,708,280.08)	(4,488,135.52)	(3,586,121.18)
Total Buildings & Improvements	<u>15,539,491.46</u>	<u>15,759,636.02</u>	<u>16,631,949.98</u>
Furniture & Equipment	1,528,332.85	1,528,332.85	1,528,332.85
Accumulated Depreciation Furniture & Equipment	(1,061,057.19)	(1,017,672.72)	(844,134.80)
Total Furniture & Equipment	<u>467,275.66</u>	<u>510,660.13</u>	<u>684,198.05</u>
Vehicles	21,436.09	21,436.09	21,436.09
Accumulated Depreciation Vehicles	(21,436.09)	(21,436.09)	(21,436.09)
Total Vehicles	<u>-</u>	<u>-</u>	<u>-</u>
Total Capital Assets	<u>17,428,577.12</u>	<u>17,692,106.15</u>	<u>18,737,958.03</u>
TOTAL ASSETS	<u>\$ 24,603,071.32</u>	<u>\$ 25,379,899.71</u>	<u>\$ 26,328,720.63</u>
LIABILITIES & NET ASSETS			
Liabilities			
Bonds Payable			
KUMC 2010P-1 Bond	\$ -	\$ -	\$ 705,000.00
KUMC 2010P-2 Build America Bond	11,255,000.00	11,980,000.00	11,980,000.00
Total Bonds Payable	<u>11,255,000.00</u>	<u>11,980,000.00</u>	<u>12,685,000.00</u>
Total Liabilities	11,255,000.00	11,980,000.00	12,685,000.00
Net Assets	<u>13,348,071.32</u>	<u>13,399,899.71</u>	<u>13,643,720.63</u>
TOTAL LIABILITIES & NET ASSETS	<u>\$ 24,603,071.32</u>	<u>\$ 25,379,899.71</u>	<u>\$ 26,328,720.63</u>

**Johnson County Education Research Triangle
KUMC Clinical Research Center Budget Report**

	Approved FY18 Budget			Actual FY18 as of 09/30/2017		
	JCERT	Other Sources	Total	JCERT	Other Sources	Total
Revenue						
JCERT Sales Tax	\$ 5,900,000		\$ 5,900,000	\$ 1,501,700		\$ 1,501,700
Clinical Trial Collection		3,300,000	3,300,000		2,198,061	2,198,061
Cancer Research Center Clinical Services		1,560,000	1,560,000		341,081	341,081
Cancer Center Support Grants for NCI-designated Cancer Centers		208,364	208,364		24,203	24,203
KU Cancer Center Support		2,440,436	2,440,436		184,403	184,403
Facility Rent Collection		402,617	402,617		95,781	95,781
Common Area Maintenance Fee	-	317,328	317,328		84,205	84,205
Interest Earnings			-	4,555		4,555
Build America Bond Interest Subsidy	162,600	-	162,600	81,695	-	81,695
Total Revenue	6,062,600	8,228,745	14,291,345	1,587,950	2,927,734	4,515,684
Expenditures						
Payroll						
Director, Phase I Program & startup	322,617	68,669	391,286	15,907	52,699	68,606
2 Physician Positions	678,939	64,236	743,175	23,699	14,491	38,190
Research Leadership	216,549	201,414	417,963	57,840	11,109	68,949
Business Development	159,788		159,788	36,893	-	36,893
Research Scientists	328,713	71,528	400,241	68,229	-	68,229
Research Laboratory Staff	65,796	266,584	332,380	-	72,674	72,674
Research Nursing, Study Coordination & Regulatory	1,325,016	5,313,424	6,638,440	563,459	896,920	1,460,379
Budget & Finance Support	332,307	125,037	457,344	26,872	130,796	157,668
Total Payroll	3,429,725	6,110,892	9,540,617	792,899	1,178,689	1,971,588
Other Operating Expense						
Operating Expenses	200,000	250,000	450,000	69,927	320,051	389,978
Telephone & Networking	45,000		45,000	7,291		7,291
Mass Spec Lease	160,963		160,963			-
Clinical Trial Research Initiatives for Comprehensive Status	300,000	500,000	800,000	13,947	29,118	43,065
KUH Clinical Services Settlement Cost - Operations	800,000	1,760,000	2,560,000		379,694	379,694
KUH Clinical Services Settlement Cost - Common Area Maintenance		500,083	500,083		95,781	95,781
KUH Clinical Services Settlement Cost - Facility Rent	-	219,862	219,862	-	84,205	84,205
Total Other Operating Expense	1,505,963	3,229,945	4,735,908	91,165	908,849	1,000,014
Facility Expense						
Facility Operations	890,413		890,413	209,404	-	209,404
Withheld by Trustee for Debt Service & Trustee Expenses	1,222,464	-	1,222,464	305,644	-	305,644
Total Facility Expense	2,112,877	-	2,112,877	515,048	-	515,048
Total Expenditures	\$ 7,048,565	\$ 9,340,837	\$ 16,389,402	\$ 1,399,112	\$ 2,087,538	\$ 3,486,650
Revenue less Expenditures	(985,965)	(1,112,092)	(2,098,057)	188,838	840,196	1,029,034
Less Current Amount Set aside for Capital Reserve	400,000	-	400,000	400,000		400,000
Less Current Amount Set aside for Operations	100,000		100,000	100,000		100,000
Operating Account - Beginning Balance	3,349,356	3,440,291	6,789,647	4,014,896	4,774,889	8,789,785
Operating Account - Ending Balance	\$ 1,863,391	\$ 2,328,199	\$ 4,191,590	\$ 3,703,734	\$ 5,615,085	\$ 9,318,819

**Johnson County Education Research Triangle
KUMC Clinical Research Center
Statement of Net Assets**

	June 30, 2017	Revised June 30, 2016	June 30, 2015
ASSETS			
Cash and Cash Equivalents (Unencumbered)			
UMB Trustee Accounts (Bond Reserve /P&I)	\$ 1,763,142.56	\$ 1,756,900.60	\$ 2,004,496.35
KUMC JCERT Operations	4,014,896.00	4,283,862.00	4,363,737.00
KUMC JCERT Capital Reserve	809,755.00	550,000.00	150,000.00
KUMC JCERT Operating Reserve	1,100,000.00	1,000,000.00	400,000.00
Total Cash and Cash Equivalents (Unencumbered)	<u>7,687,793.56</u>	<u>7,590,762.60</u>	<u>6,918,233.35</u>
UMB Trustee Accounts Market Value Change	-	-	862.40
Capital Assets			
Land 4350 Shawnee Mission Parkway	1,421,810.00	1,421,810.00	1,421,810.00
Clinical Research Center Building & Improvements	20,247,771.54	20,218,071.16	20,196,950.00
Accumulated Depreciation Building & Improvements	(4,488,135.52)	(3,586,121.18)	(2,707,755.92)
Total Buildings & Improvements	<u>15,759,636.02</u>	<u>16,631,949.98</u>	<u>17,489,194.08</u>
Furniture & Equipment	1,528,332.85	1,528,332.85	1,517,227.18
Accumulated Depreciation Furniture & Equipment	(1,017,672.72)	(844,134.80)	(747,171.69)
Total Furniture & Equipment	<u>510,660.13</u>	<u>684,198.05</u>	<u>770,055.49</u>
Vehicles	21,436.09	21,436.09	21,436.09
Accumulated Depreciation Vehicles	(21,436.09)	(21,436.09)	(18,756.69)
Total Vehicles	<u>-</u>	<u>-</u>	<u>2,679.40</u>
Total Capital Assets	<u>17,692,106.15</u>	<u>18,737,958.03</u>	<u>19,683,738.97</u>
TOTAL ASSETS	<u><u>\$ 25,379,899.71</u></u>	<u><u>\$ 26,328,720.63</u></u>	<u><u>\$ 26,602,834.72</u></u>
LIABILITIES & NET ASSETS			
Liabilities			
Bonds Payable			
KUMC 2010P-1 Bond	\$ -	\$ 705,000.00	\$ 1,390,000.00
KUMC 2010P-2 Build America Bond	11,980,000.00	11,980,000.00	11,980,000.00
Total Bonds Payable	<u>11,980,000.00</u>	<u>12,685,000.00</u>	<u>13,370,000.00</u>
Total Liabilities	11,980,000.00	12,685,000.00	13,370,000.00
Net Assets	<u>13,399,899.71</u>	<u>13,643,720.63</u>	<u>13,232,834.72</u>
TOTAL LIABILITIES & NET ASSETS	<u><u>\$ 25,379,899.71</u></u>	<u><u>\$ 26,328,720.63</u></u>	<u><u>\$ 26,602,834.72</u></u>

**Johnson County Education Research Triangle
KUMC Clinical Research Center Budget Report**

	Approved FY17 Budget			Actual FY17 as of 06/30/2017		
	JCERT	Other Sources	Total	JCERT	Other Sources	Total
Revenue						
JCERT Sales Tax	\$ 5,800,000		\$ 5,800,000	\$ 5,818,800		\$ 5,818,800
Clinical Trial Collection		2,600,000	2,600,000		4,708,121	4,708,121
Cancer Research Center Clinical Services		1,560,000	1,560,000		2,568,754	2,568,754
Cancer Center Support Grants for NCI-designated Cancer Centers		174,200	174,200		258,684	258,684
KU Cancer Center Support		2,693,494	2,693,494		2,025,064	2,025,064
Facility Rent Collection		500,084	500,084		402,617	402,617
Common Area Maintenance Fee	-	219,862	219,862		317,328	317,328
Interest Earnings			-	21,115		21,115
Build America Bond Interest Subsidy	162,600	-	162,600	163,478	-	163,478
Total Revenue	5,962,600	7,747,640	13,710,240	6,003,393	10,280,568	16,283,961
Expenditures						
Payroll						
Director, Phase I Program & startup	424,801	68,669	493,470	70,883	333,021	403,904
2 Physician Positions	375,172	238,669	613,841	190,799	323,253	514,052
Research Leadership	225,003	177,054	402,057	259,016	141,792	400,808
Business Development	179,788		179,788	157,754	-	157,754
Research Scientists	117,000		117,000	226,188	51,126	277,314
Research Laboratory Staff	226,700	180,276	406,976	97,014	230,814	327,828
Research Nursing, Study Coordination & Regulatory	1,346,208	4,173,602	5,519,810	2,077,312	3,921,010	5,998,322
Budget & Finance Support	241,750	281,579	523,329	358,779	143,706	502,485
Total Payroll	3,136,422	5,119,849	8,256,271	3,437,745	5,144,722	8,582,467
Other Operating Expense						
Operating Expenses	200,000	125,700	325,700	165,055	309,999	475,054
Telephone & Networking	25,000		25,000	34,700		34,700
Mass Spec Lease	160,963		160,963	-		-
Clinical Trial Research Initiatives for Comprehensive Status	500,000	328,300	828,300	150,930	91,028	241,958
KUH Clinical Services Settlement Cost - Operations	800,000	1,560,000	2,360,000	-	2,408,735	2,408,735
KUH Clinical Services Settlement Cost - Common Area Maintenance		219,862	219,862		402,617	402,617
KUH Clinical Services Settlement Cost - Facility Rent	-	500,084	500,084	-	317,328	317,328
Total Other Operating Expense	1,685,963	2,733,946	4,419,909	350,685	3,529,707	3,880,392
Facility Expense						
Facility Operations	880,569		880,569	758,433	-	758,433
Withheld by Trustee for Debt Service & Trustee Expenses	1,222,465	-	1,222,465	1,225,496	-	1,225,496
Total Facility Expense	2,103,034	-	2,103,034	1,983,929	-	1,983,929
Total Expenditures	\$ 6,925,419	\$ 7,853,795	\$ 14,779,214	\$ 5,772,359	\$ 8,674,429	\$ 14,446,788
Revenue less Expenditures	(962,819)	(106,155)	(1,068,974)	231,034	1,606,139	1,837,173
Less Current Amount Set aside for Capital Reserve	400,000	-	400,000	400,000	-	400,000
Less Current Amount Set aside for Operations	100,000		100,000	100,000		100,000
Operating Account - Beginning Balance	3,424,181	173,011	3,597,192	4,283,862	3,168,750	7,452,612
Operating Account - Ending Balance	\$ 1,961,362	\$ 66,856	\$ 2,028,218	\$ 4,014,896	\$ 4,774,889	\$ 8,789,785